

## RM-CG CEILING ARRAY MICROPHONE for ADECIA Solutions



One RM-CG covers  
an area of ~ 50m<sup>2</sup>



Available only in combination with YAMAHA  
SPEAKER BUNDLES for ADECIA Solutions to  
get full ADECIA advantages

### SPECIAL FEATURES OF THE COMPLETE ADECIA SOLUTION



For medium sized to bigger  
rooms, from 5 to 50 people



Easy to install and operate with a web based  
User Interface – works with all conferencing  
platforms



Professional Audio Quality for your  
Conference from Input to Output  
thanks to Yamaha's Technologies

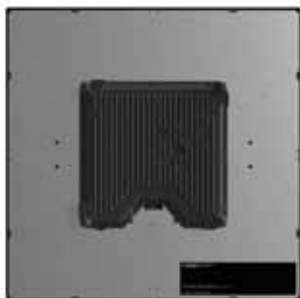


Unique “Auto Room Tuning” sets all  
parameters of the devices to get the best  
acoustic settings for the room

 Dante



### RM-CG CEILING ARRAY MICROPHONE



- FOCUSES ON VOICES AND ELIMINATE UNWANTED SOUNDS AND NOISES
- 4 DYNAMIC AUTO TRACKING BEAMS TO CAPTURE EVERYONE IN A ROOM,
- NO BLIND SPOTS
- BUILD IN AUDIO POST PROCESSING FOR OUTSTANDING INTELLIGIBILITY
  - ACOUSTIC ECHO CANCELLATION
  - DYNAMIC VOICE TRACKING
  - AUTO GAIN CONTROL
  - NOISE REDUCTION
  - DE-REVERBERATION (REMOVING IN-ROOM ECHO)
  - AUTO MIXING OF 4 DYNAMIC BEAMS
  - UNIQUE HUMAN VOICE ACTIVITY DETECTION (HVAD)
- DANTE AUDIO, CONTROL TRANSMISSION AND POE SUPPLY THROUGH 1 LAN CABLE
- 3 MOUNTING METHODS

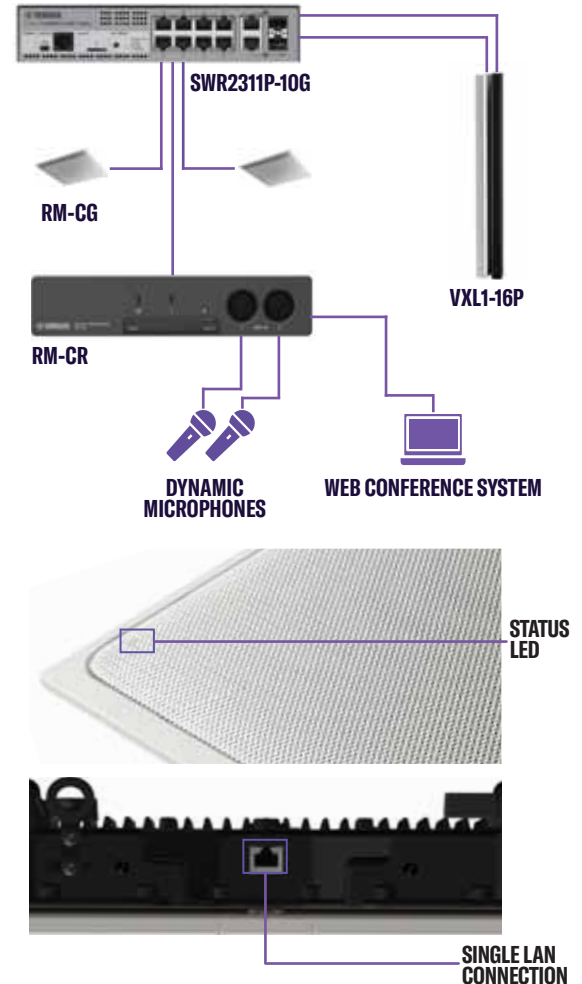
**Important:**

The RM-Series microphones can be only sold together with a Speaker Bundle for ADECIA. Only the combination delivers the outstanding performance and quality of the ADECIA solution. In addition a Level 2 PoE Switch is needed as the main components are powered over Ethernet!

## SPECIFICATIONS

RM-CG CEILING ARRAY MICROPHONE			
General	Dimensions	560 (W) x 90 (H) x 560 (D) mm (including protrusion/microphone panel: 22mm)	
	Weight	5.6kg	
	Power Requirements	PoE (IEEE 802.3af)	
	Maximum Power Consumption	7.2W	
	Connector	RJ-45	
	In Operation	Temperature	0°C - 40°C
		Humidity	30% - 90% (no condensation)
	Storage	Temperature	-20°C - 60°C
		Humidity	20% - 90% (no condensation)
	Indicators	Front indicator (Mute/Unmute & Status), Network port indicator	
	Mount	Ceiling mount, Wire mount, VESA mount	
	Maximum Device Number with RM-CR	4	
	Accessories (* Including a spare respectively)	Construction description, (Guarantee), Grille x 1, Screws for grille (M3 x 8mm) x 5*, Screw cover x 4, Cutting template x 1, C ring x 1, Screws for C ring x 2, Hanger angle x 1, Screws for hanger angle (M4 x 20mm) x 5*, Terminal cover x 1, Safety wire x 1, Binding band x 1, Clamp plate x 2	
	Dust Protection	IP5X for dust protection (with terminal cover)	
	Plenum Rating	UL2043 (with terminal cover)	
Network	Ethernet	Dante, Remote Control, Web UI, PoE	
	Cable Requirements	CAT5e or higher (STP)	
Audio	Audio I/O	Dante 1in/2out	
	Sampling Rate	48kHz	
	Bit Depth	24bit	
	Latency	58ms (including signal processing)	
	Frequency Response	160Hz - 16kHz (-10dB)	
	Maximum Input Level of SPL (0dBFS)	117.8dB SPL	
	Self Noise	-0.8dBA SPL	
	SN Ratio (Ref. 94dB SPL at 1kHz)	94.8dBA	
	Sensitivity	-23.8dBFS/Pa	
	Dynamic Range	118.6dBA	
Signal Processing	Multi-beam Tracking, Adaptive Echo Canceller, Noise Reduction, Dereverberation, Auto Mixer, Auto Gain Control, Parametric EQ, Output Gain		

## INSTALLATION EXAMPLE - CEILING SOLUTION

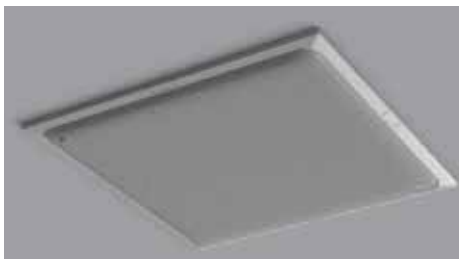


## COMPONENTS

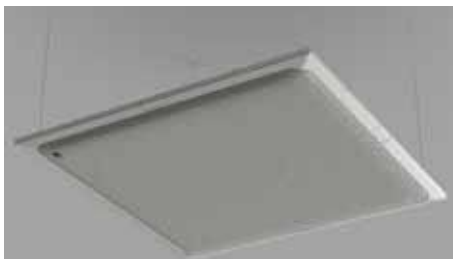
- RM-CR
- SWR2311P-10G
- RM-CG
- VXL1-16P

## MOUNTING METHODS

### FLUSH MOUNT



### WIRE HANGING



### VESA



Bundle Set Nr.	Product Name	Description
CRMCGW	RM-CG (white)	YAMAHA Ceiling array Microphone RM-CG, white
CRMCGB	RM-CG (black)	YAMAHA Ceiling array Microphone RM-CG, black